

Cette présentation a été effectuée le 18 novembre 2008, au cours de la Rencontre francophone internationale sur les inégalités sociales de santé dans le cadre des Journées annuelles de santé publique (JASP) 2008. L'ensemble des présentations est disponible sur le site Web des JASP, à l'adresse <http://www.inspq.qc.ca/archives/>.



Comprendre et contribuer à réduire les écarts de santé entre Autochtones et non-Autochtones : le rôle de la culture


Chris Lalonde (Université de Victoria)
Les Journées annuelles de santé publique 2008
Rencontre francophone internationale sur les inégalités sociales de santé
Québec City, 18 November 2008

RENCONTRE FRANCOPHONE INTERNATIONALE SUR LES INÉGALITÉS SOCIALES DE SANTÉ

12^{es} journées annuelles de santé publique

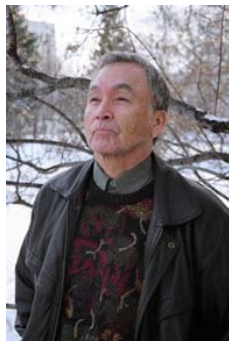
INFLUENCER L'HISTOIRE


17 18 19 20 novembre 2008 | Centre des congrès, Québec



Dr. Richard Atleo (Umeek)





- “Science claims to be able to answer any question”
- But it can’t tell you which questions are worth answering
- And it can’t tell you which answers are worth acting on or reporting back
- “It is a method that needs help”





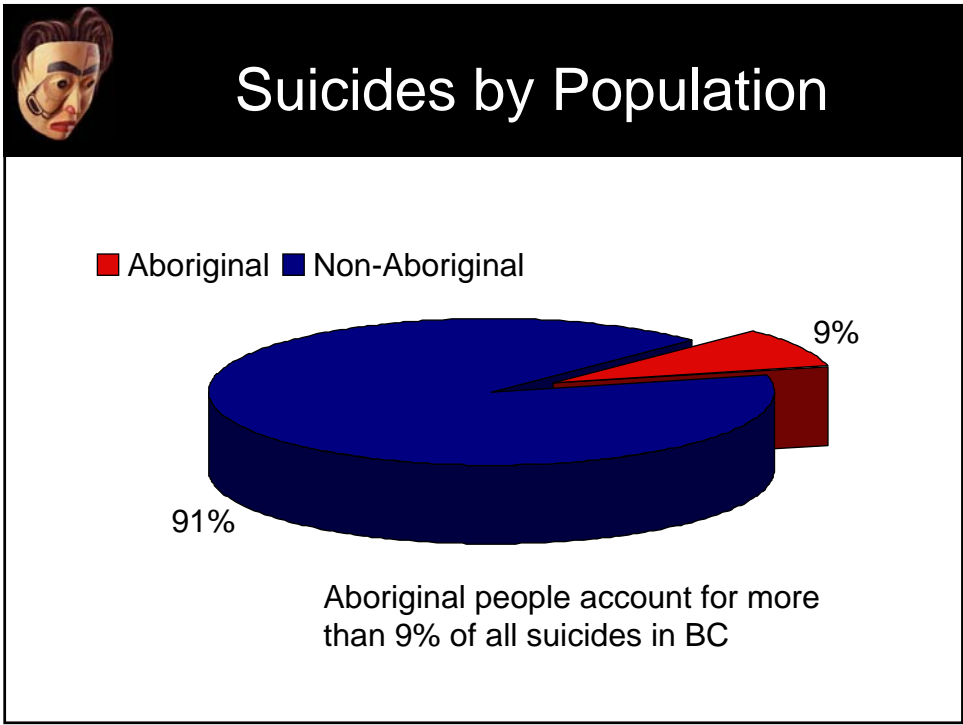
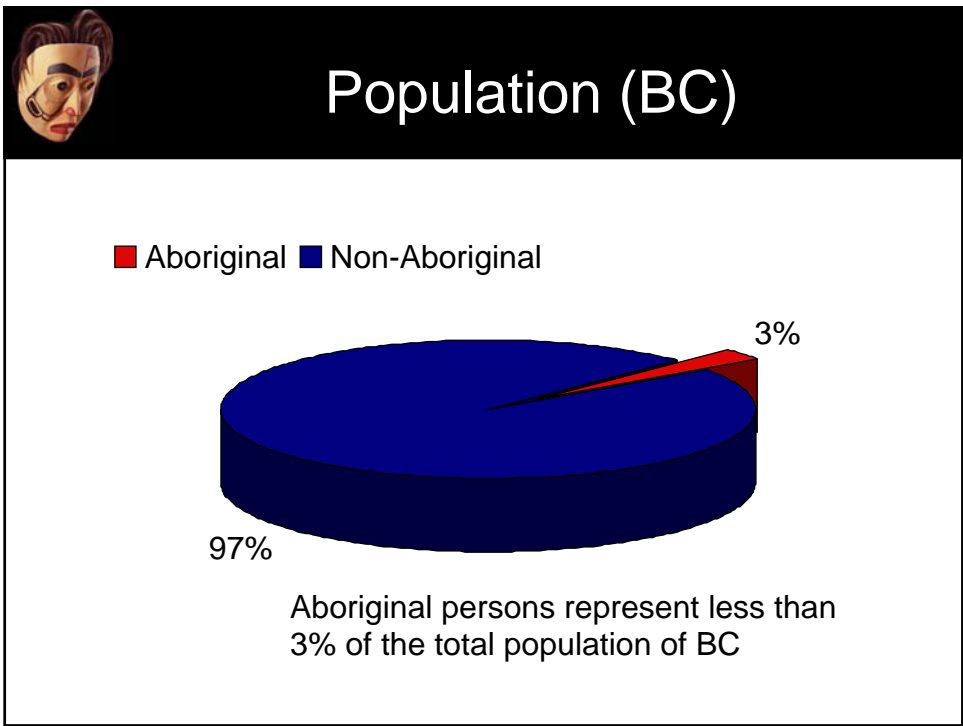
Overview

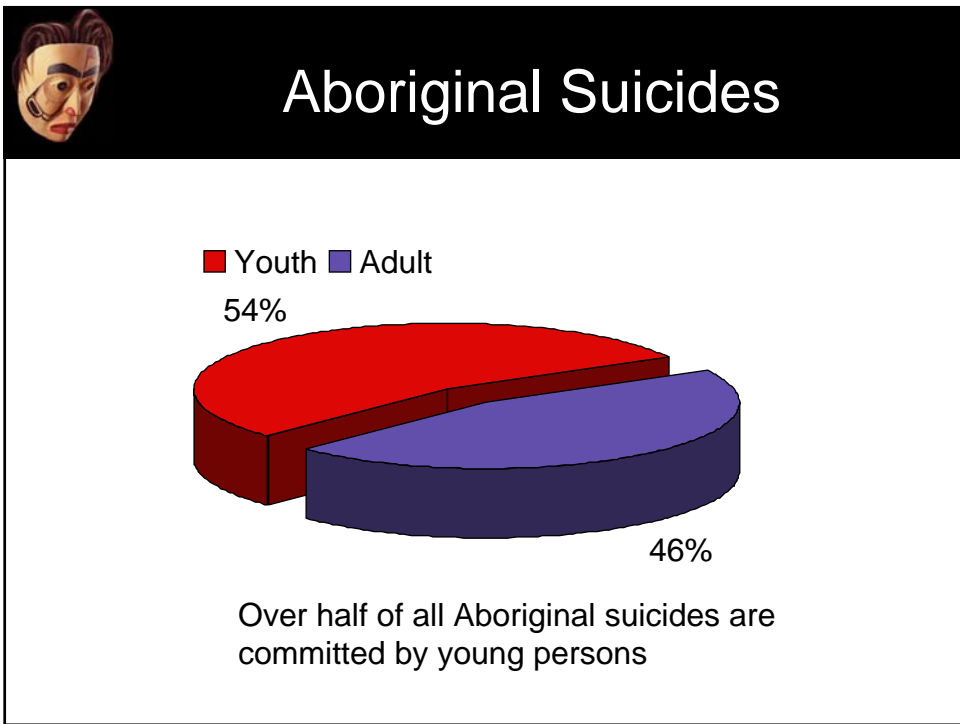
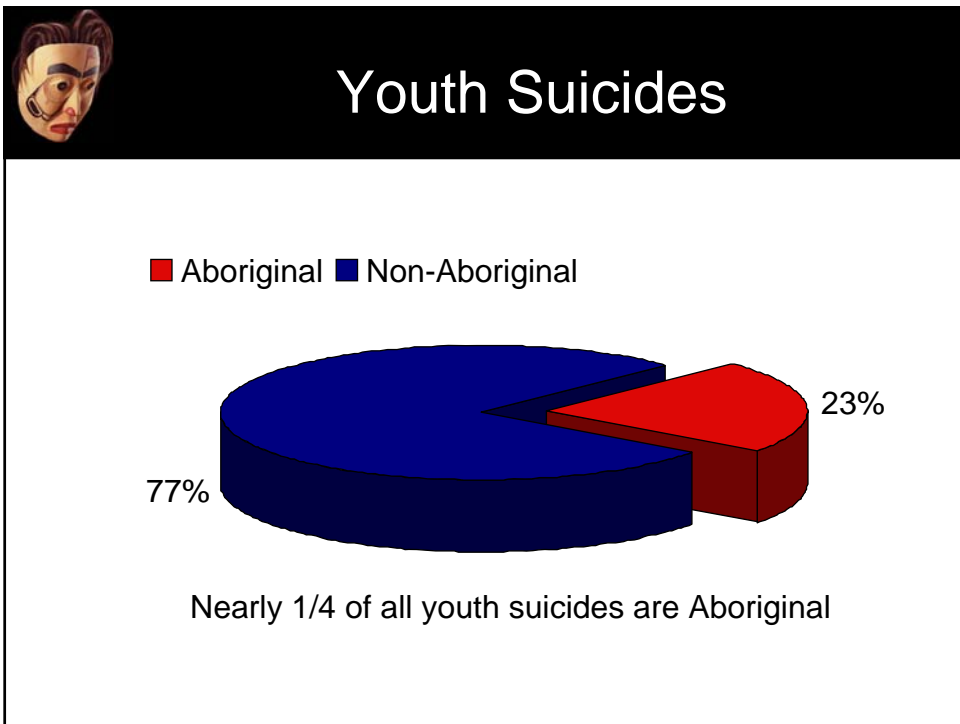
- Identity development
- Youth suicide
- Self-determination & health status
- Partnerships with:
 - Inter Tribal Health Authority
 - Assembly of Manitoba Chiefs
 - Networks: NEAR-BC & NEAR-BC-WAY



Why Aboriginal Suicide?

- Is being *Aboriginal* a risk factor?
- Is being *Young* a risk factor?
- Or do rates vary by *Place*?

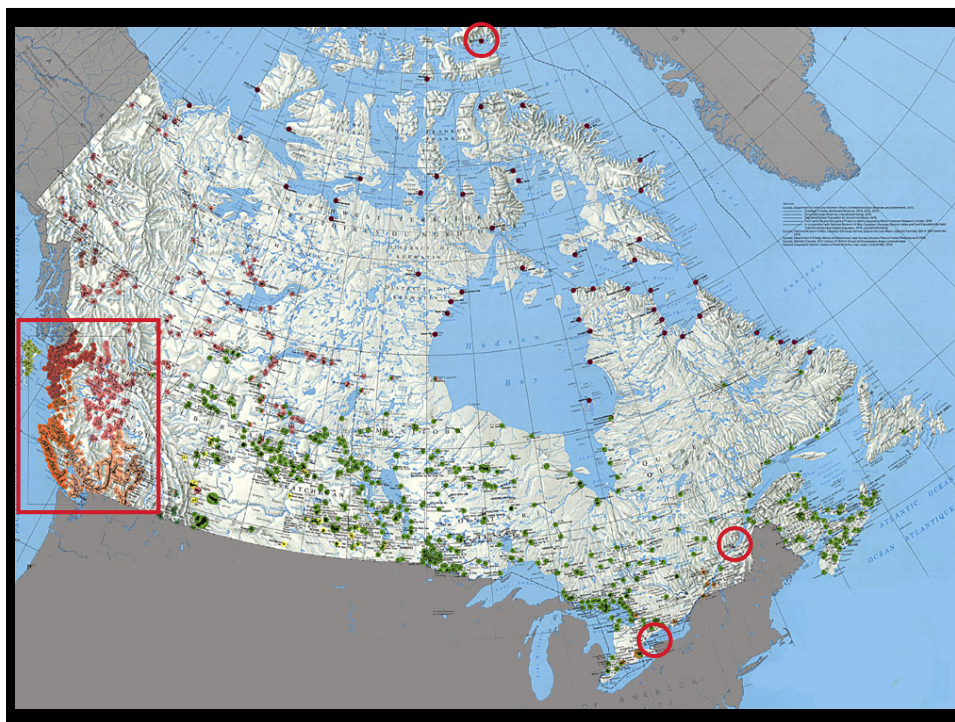


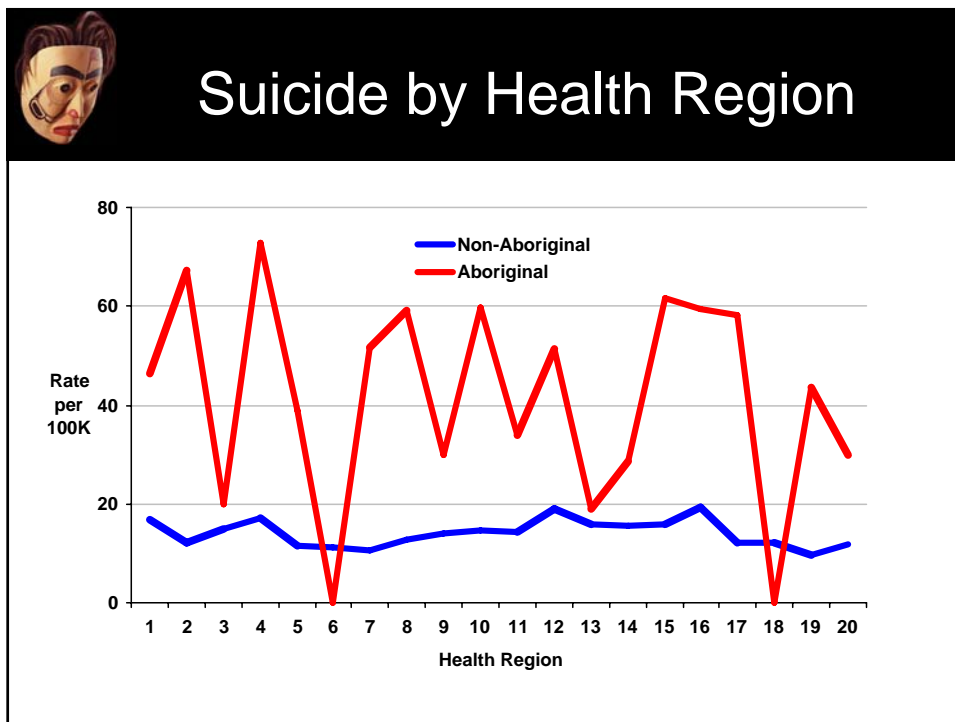
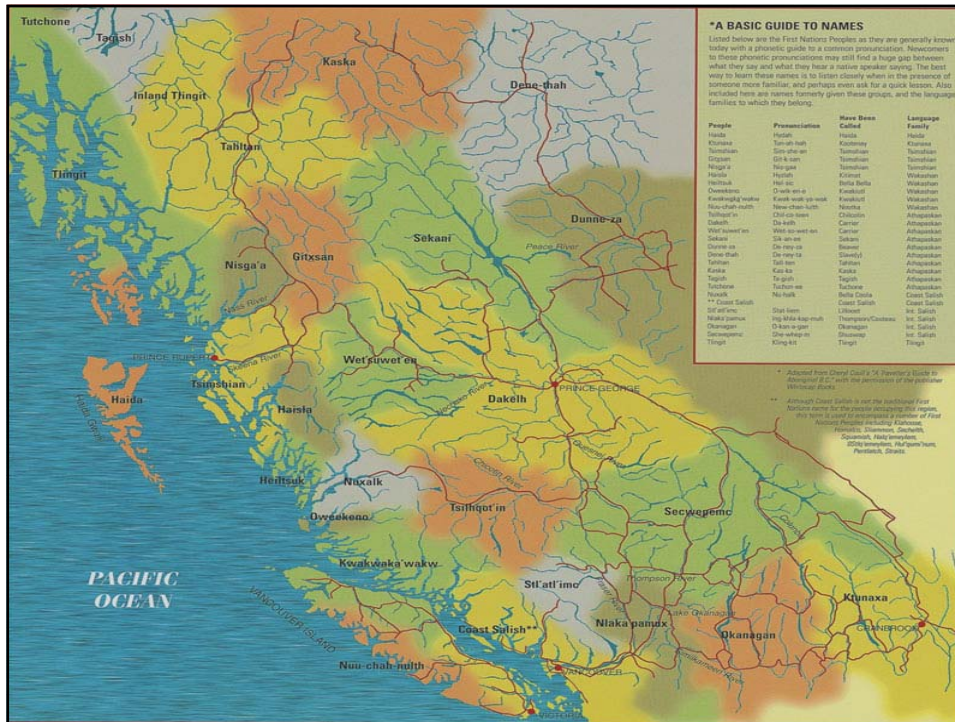


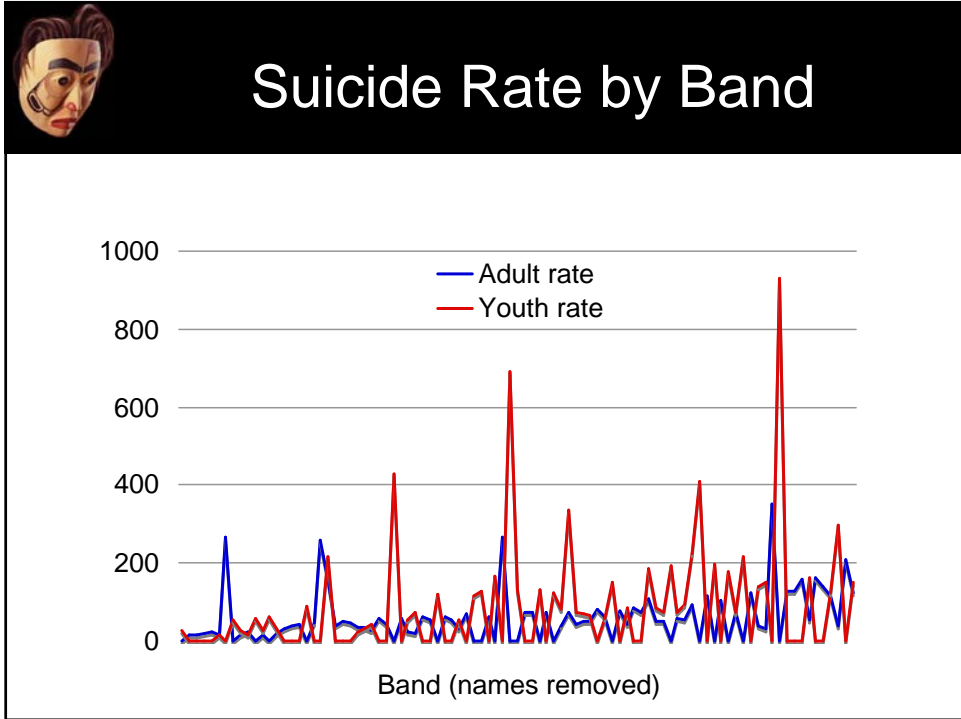
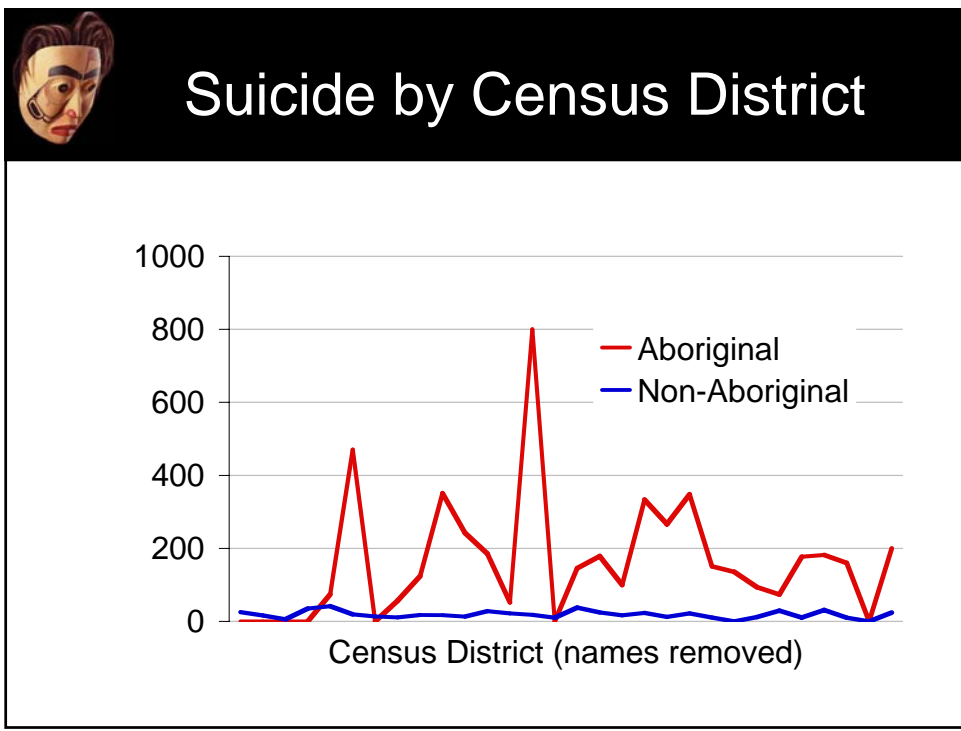


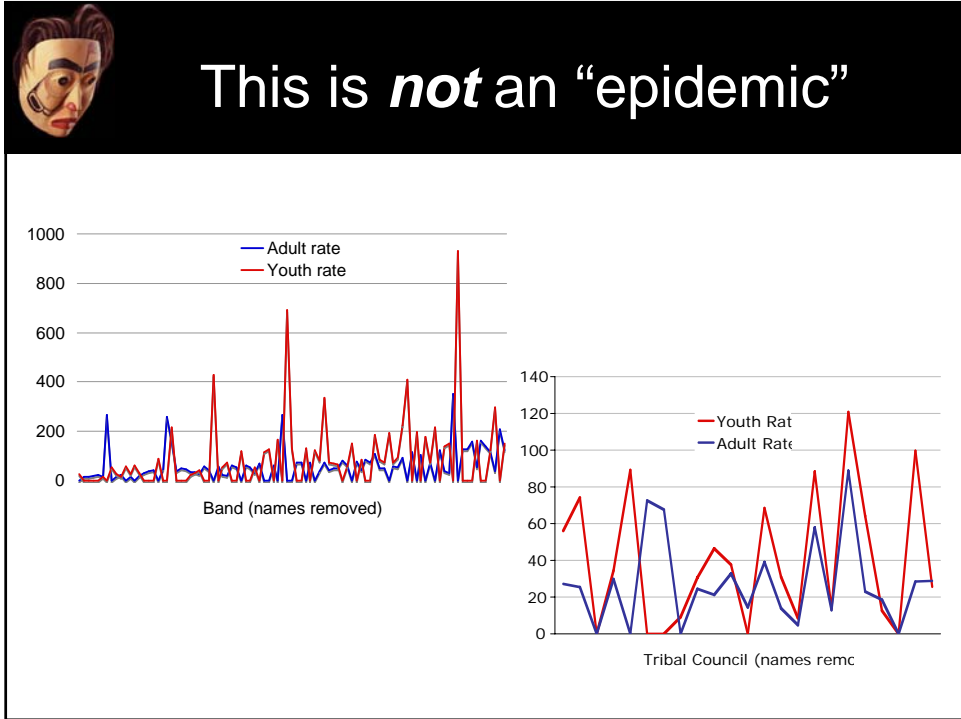
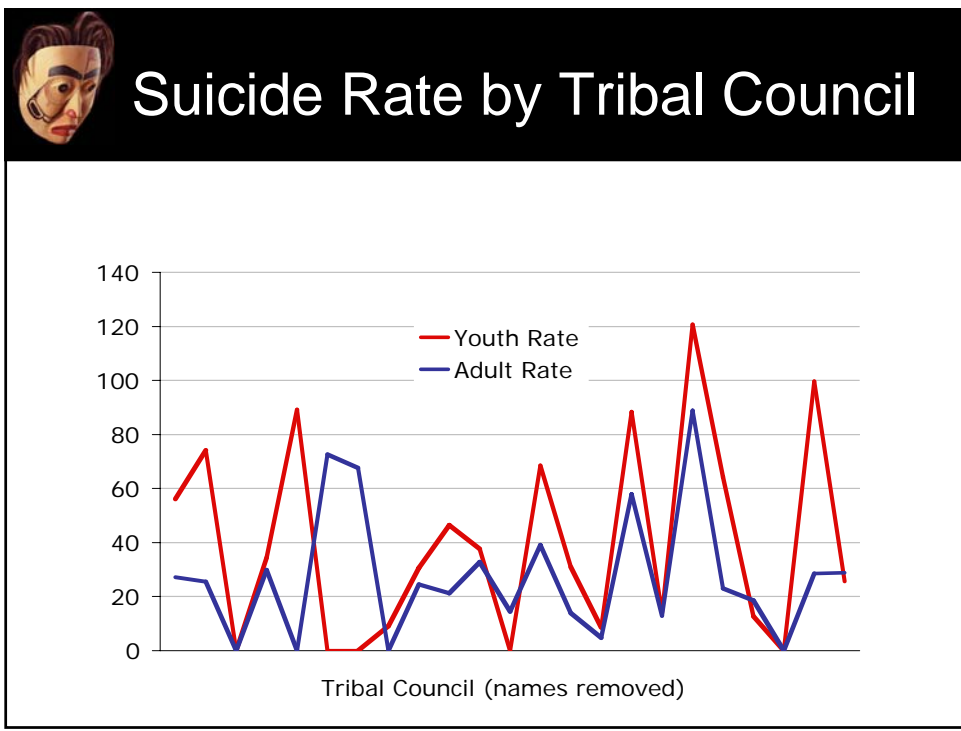
Are *all* youth at risk?

- There is an “epidemic” of suicide in “the Aboriginal population”
- Is being Aboriginal a risk factor?
- Incorrect, insulting, & dangerous











Why do rates vary?

- Two approaches...
- The *Deficit View*:
 - Differing histories of cultural assault
- The *Resilience View*:
 - Differential success in resistance and cultural reconstruction



Cultural Continuity



Preserve and
promote culture



Navigate toward
a shared future

- Measuring cultural continuity in each of nearly 200 diverse communities...

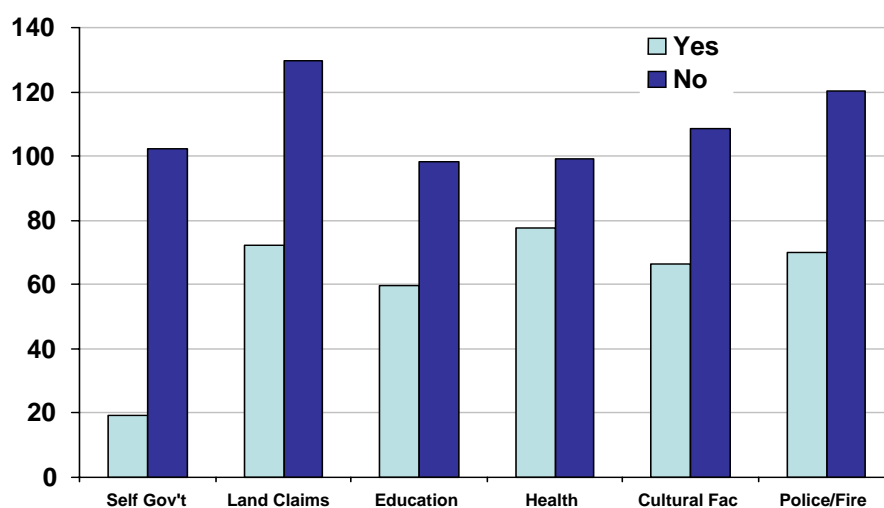


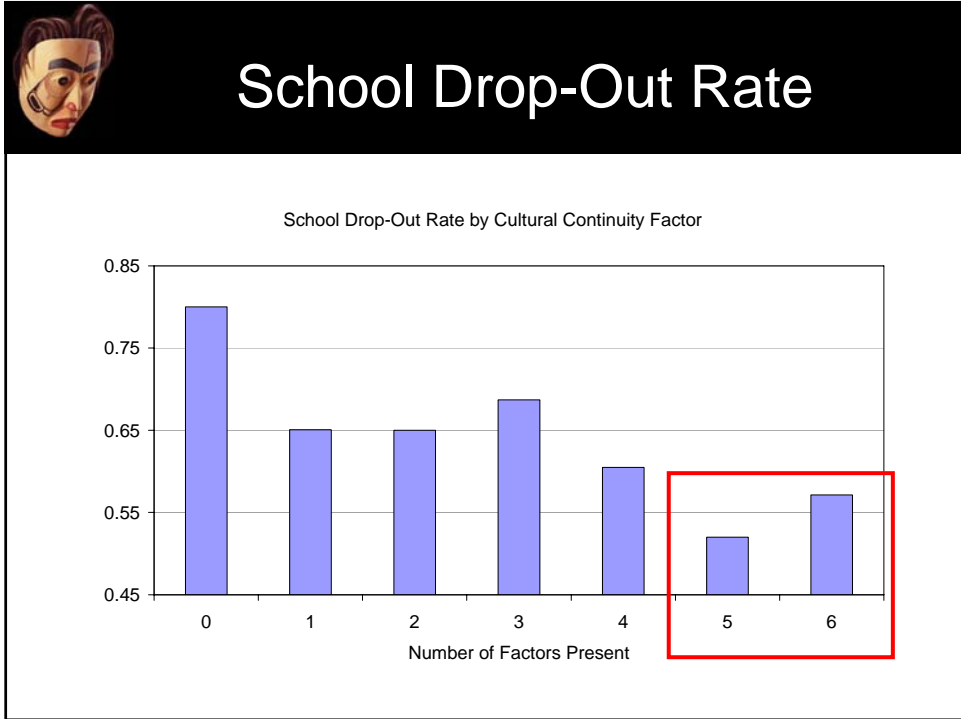
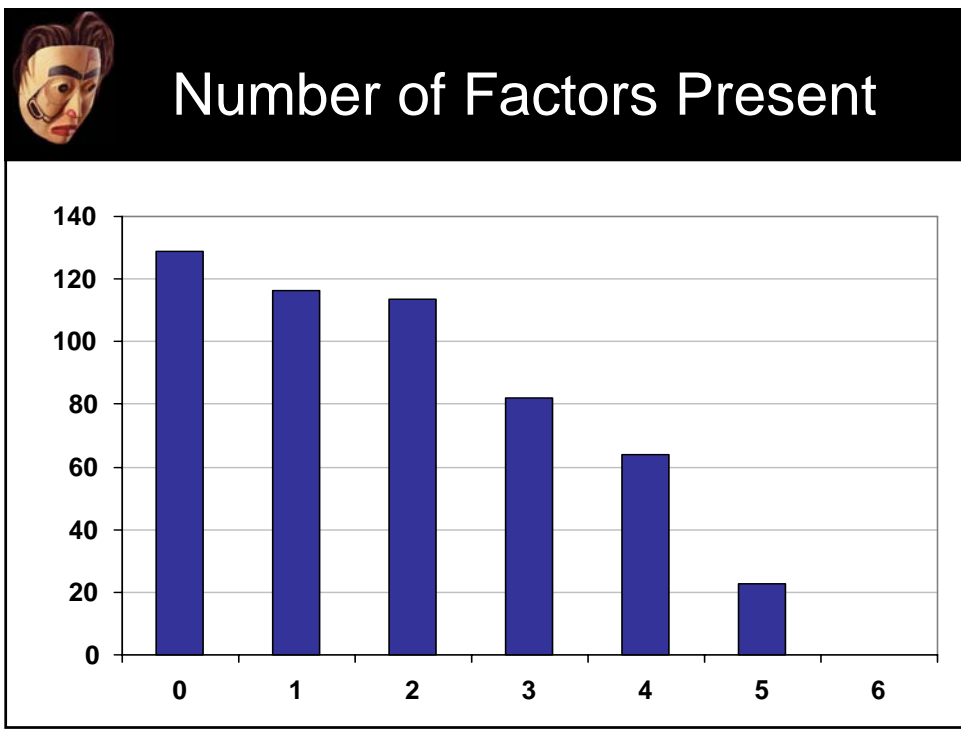
Cultural Continuity

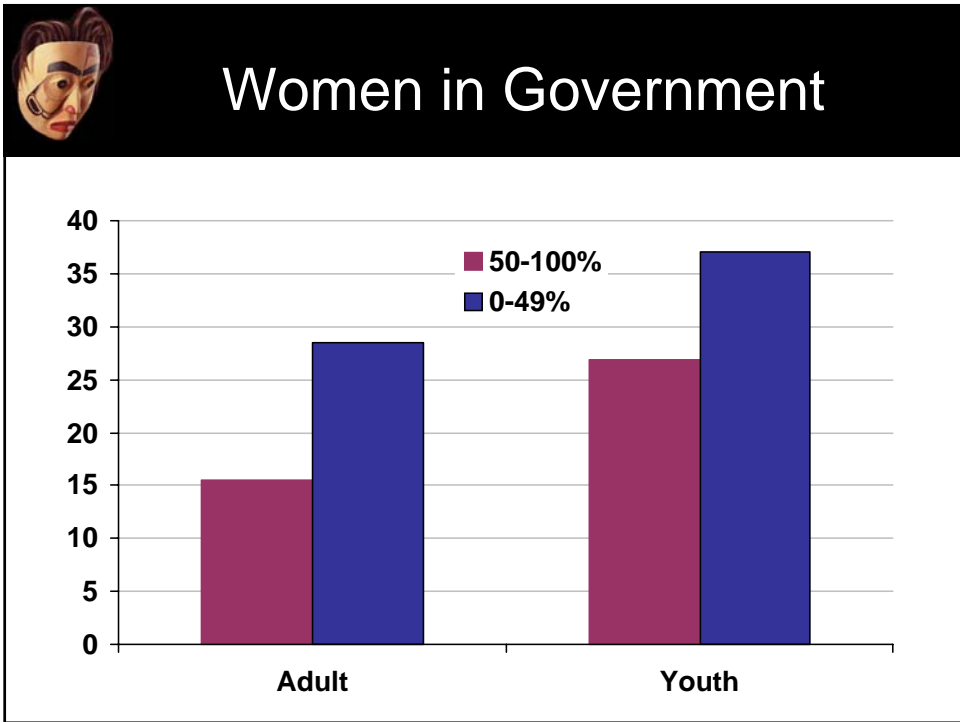
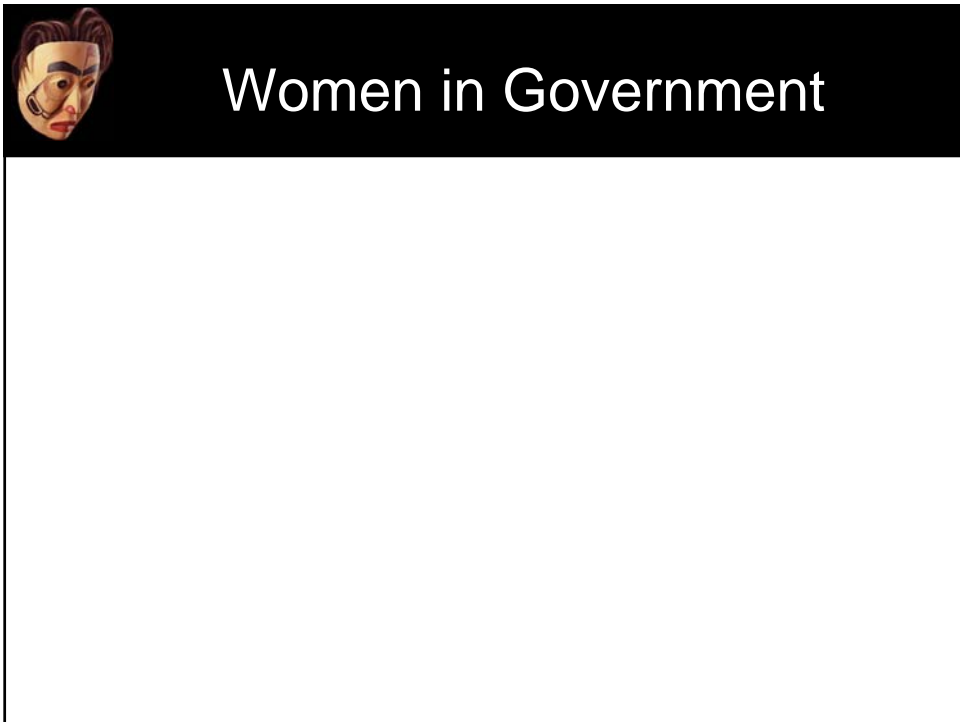
- Self-government
- Land Claims
- Education
- Health Services
- Police/Fire services
- Cultural Facilities
- Women in Government
- Child & Family Services
- Traditional Language use
- Elder-Youth interaction
- Youth programming
- School curriculum

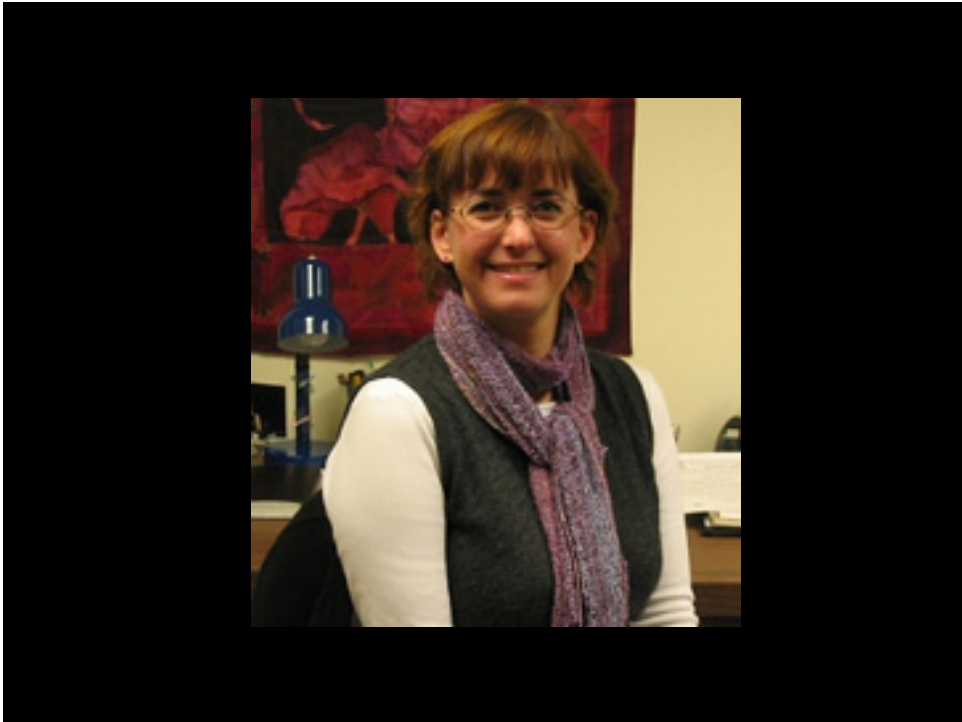


Cultural Continuity Factors











Women Leaders Study

- Semi-structured interviews 11 women leaders
- Analysis revealed four themes:
 - Identity
 - Relationships
 - Living in 2 worlds
 - Holistic caregivers



Women Leaders

- Community histories affect women's participation in government & retention of cultural traditions
- Hereditary background & knowledge of culture is valuable in creating culturally-supported leadership




Women Leaders Study

- Connections to family & community key
- Care giving role of women
- Focus on support & education of youth
- Women are integral to fostering the positive identity and well-being of youth




Next Steps...

- Can we find new & better measures of 'cultural continuity'?
- What does cultural continuity mean in particular communities?
- Are these associated with other aspects of youth health?



Expanding the 'BC Model'




Language



Language Legacies Celebrating Indigenous Cultures

FirstVoices

English Français

Des patrimoines linguistiques célébrant des cultures indigènes



Language



Elder revives vanishing language

Hupacasath elder Jessie Hamilton, 83, with her granddaughter Amber Watts, prepares to snap a photo of the proceedings yesterday at a Women's History Month awards ceremony for aboriginal women at the Royal B.C. Museum. Hamilton has been instrumental in helping to preserve the language of her people by producing a series of books, CDs and DVDs.

Photograph by : Ray Smith, Times Colonist





ITHA Partnership

- Expanding the BC Model
- Reducing Injury - Surveillance & Culture
- Reframing & Reclaiming Research



CPHiSPC




Michael Smith Foundation for
Health Research



Rationale

- “What gets measured gets reported and worried about; what goes unmeasured gets ignored.”

Ross Gittens, The Sydney Morning Herald, July 4, 2007



Need Help! ...



Centre for Aboriginal Health Research




NETWORK ENVIRONMENTS *for*
Aboriginal
Research BC

SEARCH

- HOME
- ABOUT US
- TRAINING OPPORTUNITIES
- FUNDING OPPORTUNITIES
- JOB OPPORTUNITIES
- RESEARCH NEWS / PUBLICATIONS
- EVENTS CALENDAR
- MEMBERS FORUM
- JOIN US
- RESOURCES & LINKS
- CONTACT US



[Home](#)

Network Environments for Aboriginal Research BC

NEARBC supports the development of Aboriginal health research by building linkages that will cultivate province-wide communication and collaboration.



Community Workshops

- To bring together researchers, health professionals and community members to facilitate communication
- To facilitate the discussion of community research priorities
- To assist communities and researchers to jointly develop and define research questions















Workshop Outcomes...

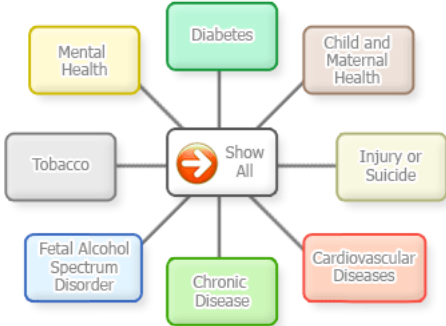
- Need for access to credible health information...
- Desire for more workshops and more community participation & involvement
- Need to adapt to local protocols
- What researchers need to know to work in community

 WWW.NEARBC.CA

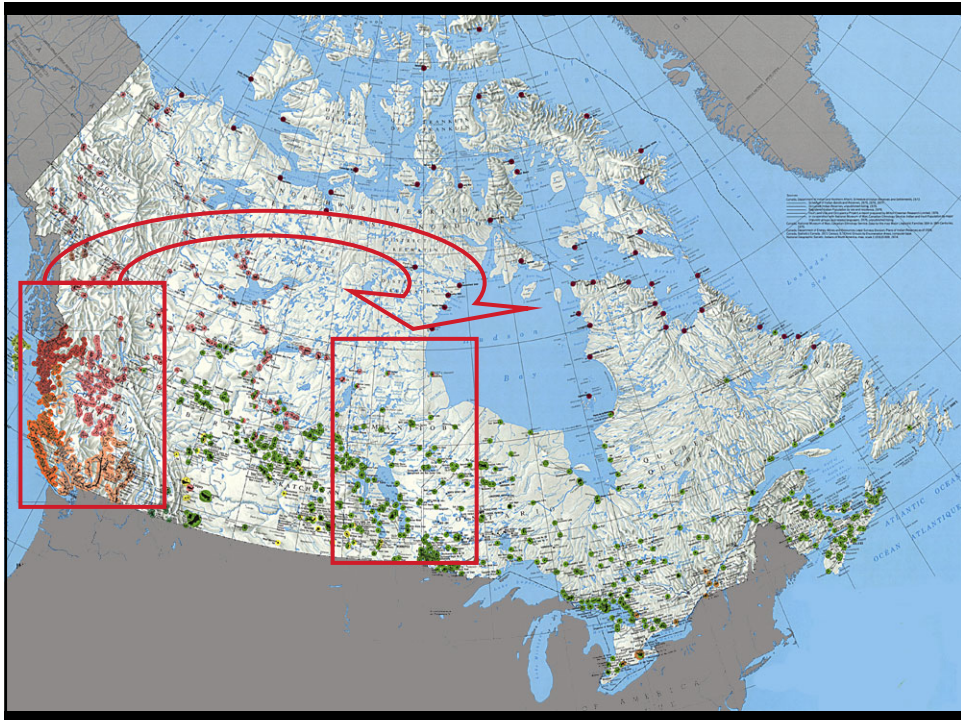
 NETWORK ENVIRONMENTS *for*
**Aboriginal
Research BC**

 **Health Abstracts**

View by Category:



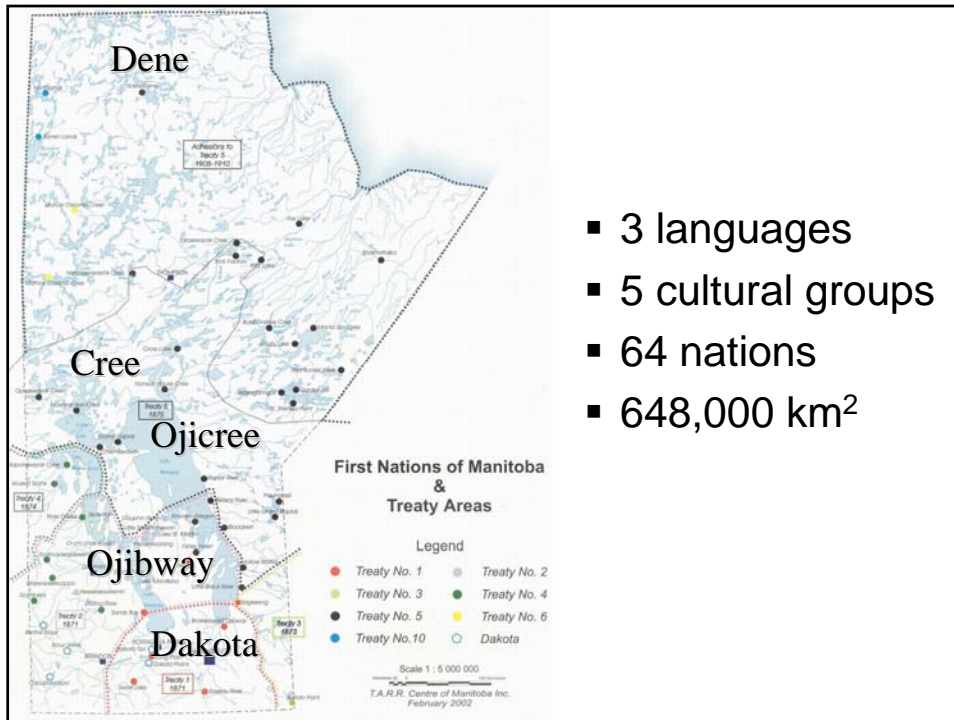
```
graph TD; A[Show All] --- B[Mental Health]; A --- C[Diabetes]; A --- D[Child and Maternal Health]; A --- E[Injury or Suicide]; A --- F[Cardiovascular Diseases]; A --- G[Chronic Disease]; A --- H[Fetal Alcohol Spectrum Disorder]; A --- I[Tobacco];
```




 **The Manitoba Project**

“Moving & Moving Beyond the BC Model”

  
CENTRE for
Aboriginal Health
RESEARCH



- 3 languages
- 5 cultural groups
- 64 nations
- 648,000 km²



The Manitoba Project

- What does “Cultural Continuity” mean to Manitoba First Nations?
- Do Dene and Dakota definitions differ?
- Do urban groups differ from land based communities? What about the Métis?
- Are these new measures of Cultural Continuity associated with outcomes *other* than suicide?



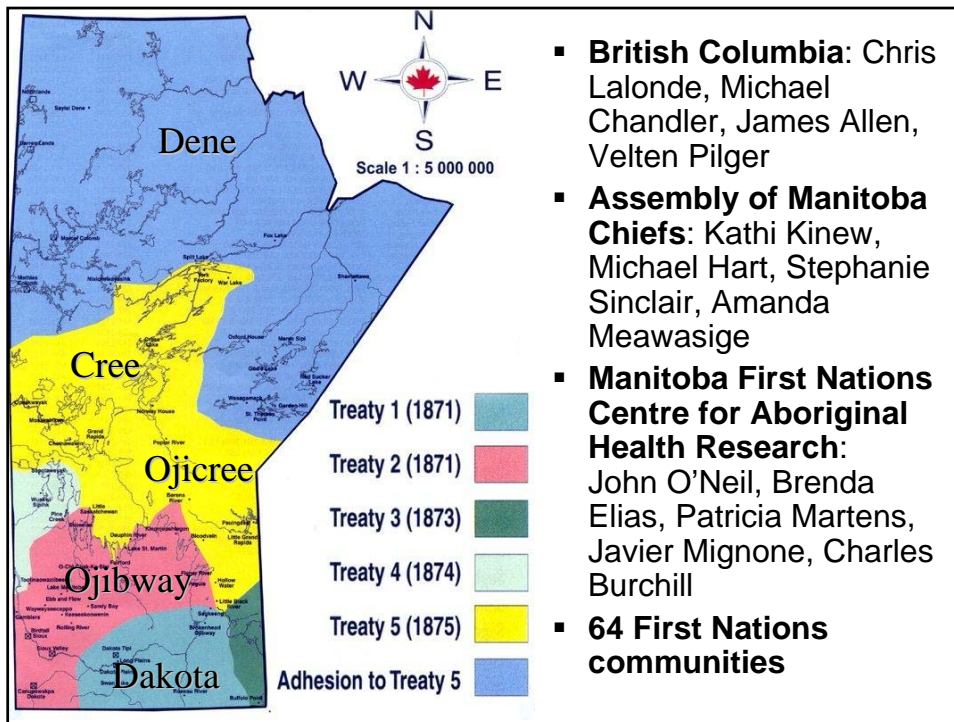
New Factors

- Self-government
- Land Claims
- Education
- Health Services
- Police/Fire services
- Cultural Facilities
- Women in government
- Child & Family Services
- Language Use



New Outcome Data

- Suicide & Suicide Attempts
- Injury data (requiring a hospitalization lasting one-day or longer)
- Sexually Transmitted Infections data
- Potential Years of Life Lost (PYLL)
- Substance Abuse
- Additional community-defined measures



Thank You / *Hay ch q'a'*

- Chris Lalonde
 lalonde@uvic.ca
 www.uvic.ca/psyc/lalonde
 chrislalonde.ca
- *Qwam Qwum tun Shqwalawun*



Acknowledgements

- **Michael Chandler**
- Richard & Marlene Atleo, Jessica Flores, Pam Frank, Erica Gehrke, Darcy Hallett, Michael Hart, Catherine Horvath, Cathy Hull, Marla Jack, Kathi Kinew, Leigh Koopman, Aislin Martin, Lisa Moberly, David Paul, Jesse Philips, Holly Pommier, Bryan Sokol, Ulrich Teucher, Florence Williams, Robin Yates
- Canadian Institutes of Health Research, Canadian Population Health Initiative, Human Early Learning Partnership, Michael Smith Foundation for Health Research, Social Sciences & Humanities Research Council of Canada, Univ. of British Columbia, Univ. of Victoria



Time for a story?

